



52 Paget Avenue Glenroy VIC

3 1 2

Comfortable and convenient, this golden-brick, three-bedroom home situated on an allotment measuring approx. 618m² is ideally positioned within walking distance of schools, shops and public transport.

The bright and airy street facing lounge boasts period allure and huge windows, inviting an abundant natural light. The kitchen and meals domain truly is the heart of this home, and overlooks the expansive rear yard. Three-bedrooms proved access to the family bathroom complete with a shower/bath combination and vanity. Outside brings to life your celebrations with a covered entertaining area overlooking the generous rear yard with established fruit trees, garage (9x6m) and storage shed.

Consider your options to live in, renovate the existing home, or consider the development potential (STCA), this

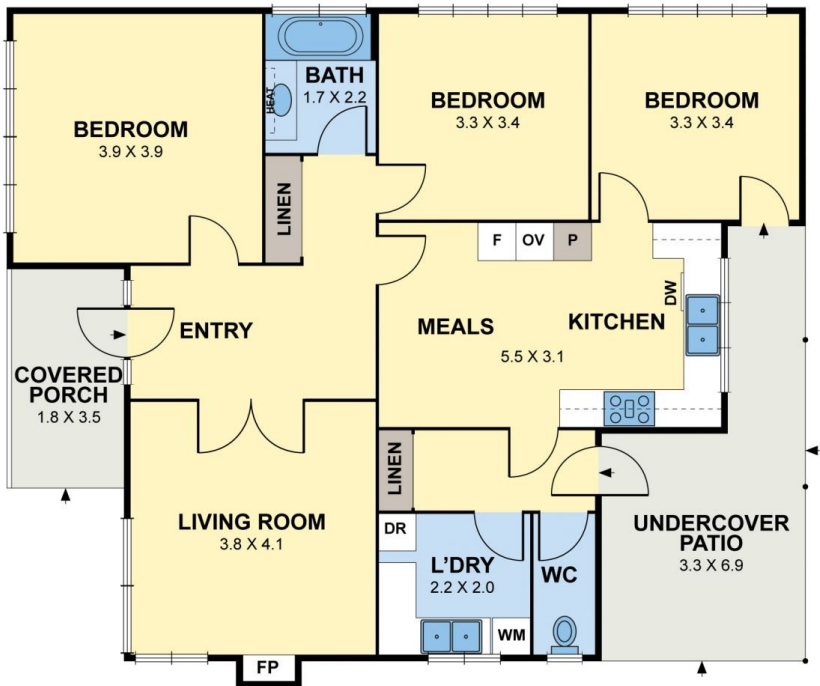
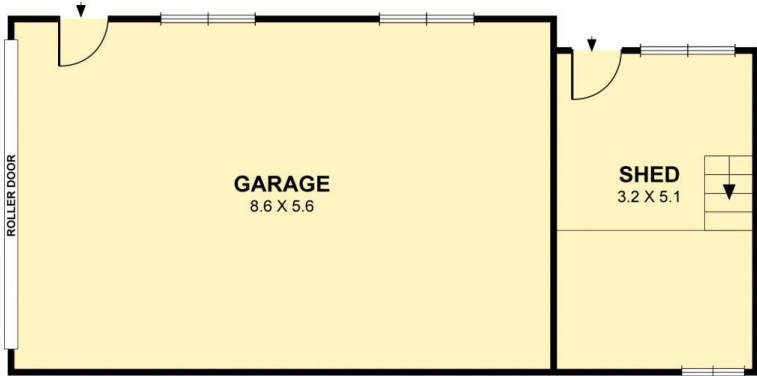
Type : House
Price : \$ 845,000
Land Size : 618 sqm
View : <https://www.peterleahy.com.au/sale/vic/north/glenroy/residential/house/8601874>



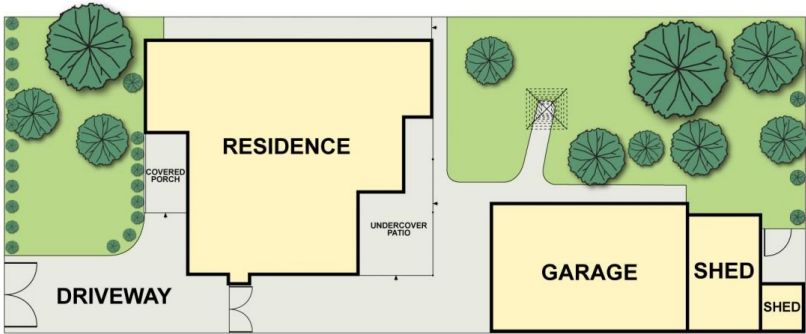
Peter Leahy
03 9350 5588

[For full version visit the website](https://www.peterleahy.com.au)

52 Paget Avenue, Glenroy



GROUND FLOOR



SITEPLAN



DISCLAIMER:

Please note plans are indicative only and not drawn to exact scale.
All dimensions are approximate