

3/12 Eldridge Street Footscray VIC

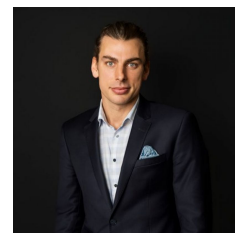
2 1 1

At the heart of Footscray's coveted lifestyle hub, this comfortable apartment presents an affordable entry level into a vibrant location close to Quarry Park, trendy cafes and transport options. Occupying the top level of this boutique complex, offering amazing views over the local area, the generous floorplan contains two carpeted bedrooms with BIR, an open plan living domain leading onto a private balcony, kitchen/meals area with ample cabinetry & electric cooking appliances, and a fully equipped bathroom incorporating laundry facilities. It's low maintenance floorplan will appeal to first home buyers and investors, looking for a smart investment with undercover parking in a coveted locale.

Type : Apartment
View : <https://www.peterleahy.com.au/sale/vic/north/footscray/residential/apartment/8267904>

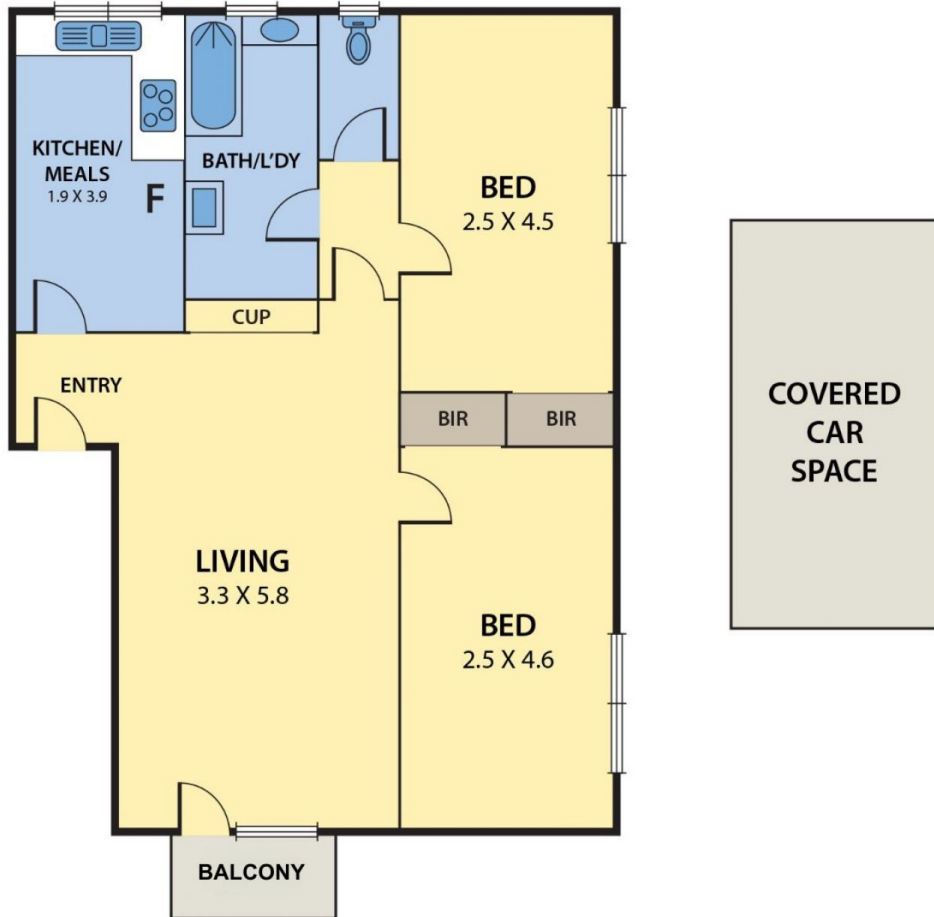


Peter Leahy
03 9350 5588



Josh Norbury
9350 5588

3/12 ELDRIDGE STREET, FOOTSCRAY



DISCLAIMER:

Please note plans are indicative only and not drawn to exact scale.
All dimensions are approximate