



15 Edward Street Fawkner VIC

3  1  3 

Solidly built in the 1950s and cherished ever since, this well-loved three bedroom classic weatherboard home provides period inspired character, comfort and the exciting potential to enhance or rebuild (STCA).

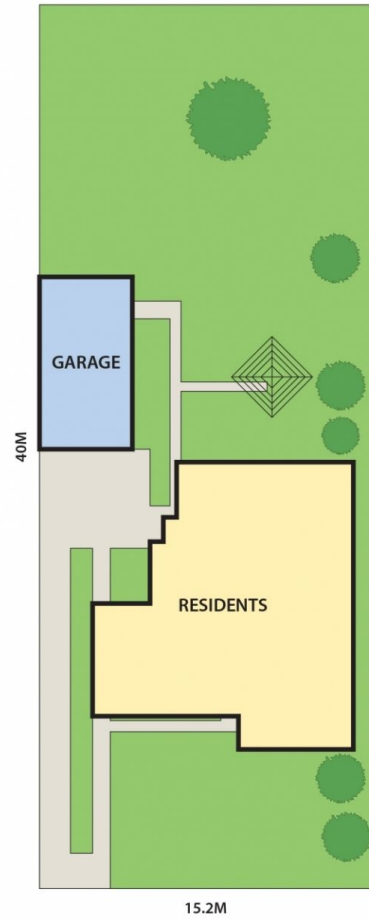
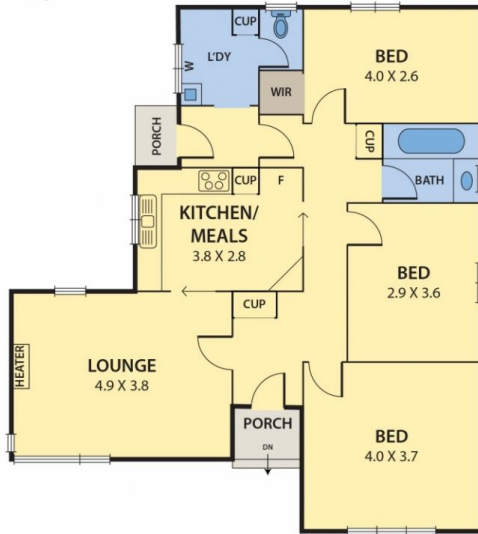
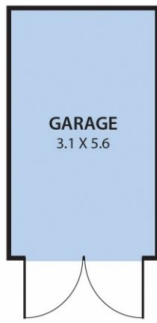
Perfect for savvy investors, starters or young families hoping to create a dream home, the property boasts an impressive allotment of approximately 606m². The street facing lounge flows through to the retro kitchen/meals boasting original cabinetry. Perfect for entertaining the generous rear yard contains the original garage an expansive lawn, while inside, the three bedrooms are serviced by a neat central bathroom.

Ideally located in a peaceful family-friendly neighbourhood, the property located close to Darul Ulum and John Fawkner College, Major Road shops, local parklands, Fawkner Leisure Centre, Train Station and a short drive to the M80 Ring Road and Campbellfield Plaza.

Price : \$ 685,000
Land Size : 606 sqm
View : <https://www.peterleahy.com.au/sale/vic/north/fawkner/residential/house/7435043>



Peter Leahy
03 9350 5588



DISCLAIMER:

Please note plans are indicative only and not drawn to exact scale.
All dimensions are approximate