

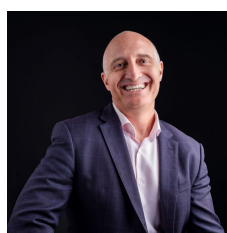


135 Ohea Street Coburg VIC

2 1 1

Wonderfully appealing on a 432m² (approx.) corner block, this classic two bedroom Californian Bungalow is now open to astute buyers offering easy entry to a community spirited locale and exciting options moving forward. Enviably positioned to North Coburg Primary, O'Heas iconic bakery, bike trails, Merri Creek parklands and the cosmopolitan shopping, transport and eateries of vibrant Sydney Road, this delightful timber home is completely comfortable with previous improvement and stands ready to fully capitalize on its coveted corner position. Retaining its lofty ceilings, leadlight windows, fretwork and elegant proportions, this appealing home with its pretty facade and private side entrance features a sizeable living room with a corner fireplace flooded in northern light, spacious kitchen with meals that includes a full suite of stainless-steel appliances and double bedrooms with robes that share an updated central bathroom. With split system heating and cooling

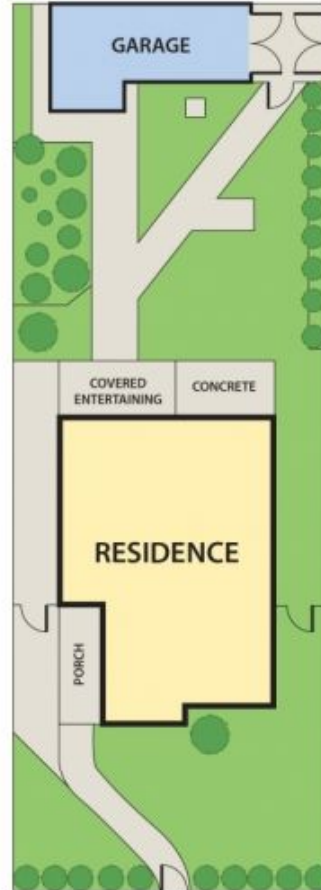
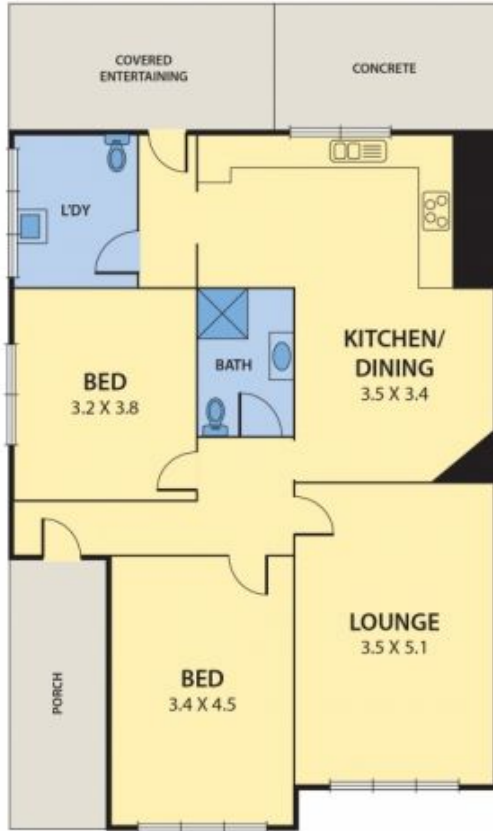
Land Size : 432 sqm
View : <https://www.peterleahy.com.au/sale/vic/north/coburg/residential/house/7435042>



Peter Leahy
03 9350 5588

135 OHEA STREET, COBURG

PETER LEAHY
REAL ESTATE



DISCLAIMER:

Please note plans are indicative only and not drawn to exact scale.
All dimensions are approximate